

SWINDON TOWN

football club

Echo



official programme 6d

For over 70 years we have been one of Swindon's leading house furnishers, offering a personal service. You cannot do better than to inspect our showrooms before making your final decision.

Contractors to

County and Borough Councils

Hospitals

Government Departments

Factories

Schools

We are open until 5.30 p.m. each evening and 1 p.m. on Wednesdays.

Telephone 5365/6

Mills & Merricks
LTD.

16-17 BRIDGE STREET, SWINDON

SWINDON TOWN FOOTBALL COMPANY LIMITED

Registered Office: COUNTY GROUND, SWINDON

Directors:

Mr. W. J. CASTLE (Chairman)

Mr. H. E. LANE (Vice-Chairman)

Messrs. F. L. COLLINGS, A. W. DONE, M. EARLE, R. FRICKER, C. J. GREEN,
F. PLYER, H. WILLIAMS and K. H. WILMER.

Manager: D. WILLIAMS.

Secretary: R. A. MORSE.

VOL. 17

SATURDAY, OCTOBER 22nd, 1966

No. 9

SATURDAY, OCTOBER 22nd, 1966

DIVISION III

SWINDON TOWN

v.

SWANSEA TOWN

Kick-off 3 p.m.

REFEREE:

Mr. N. C. H. BURTENSHAW (Gt. Yarmouth)

LINESMEN:

Red Flag—Mr. G. A. TOVEY (Kidderminster)

Yellow Flag—Mr. L. H. HOLLAND (Wheatley)

**For ALL forms of PRINTING—get in touch with the
BOROUGH PRESS SWINDON**


STATIONERY

MULTIPLE SETS

BUSINESS CARDS

LOOSELEAF LEDGERS

STATEMENTS

INVOICES

COLOUR WORK TICKETS POSTERS LEAFLETS BUSINESS FORMS

$\frac{b}{p}$

NOTEPAPER LETTERHEADS CATALOGUES BROCHURES BOOKS

SHOWCARDS


TECHNICAL LEAFLETS

DIE STAMPING

LABELS

MAGAZINES

WEDDING STATIONERY


Quality printing — delivered on time

Borough Press Swindon Limited, Eastcott Hill, Swindon

Suppliers to the Swindon Town Football Club

Swindon Sports Centre

SUPPORTERS SCARVES - RATTLES - Etc.

23 COMMERCIAL ROAD

Tel. 4270

NEWS and VIEWS

After the splendid win over Doncaster, in the League Cup Replay, hopes were high regarding the trip to Middlesbrough. Alas it was not to be, we suffered our heaviest defeat of the season, in fact for almost a year.

The luck still seems to be running against us, even on the journey north, Dawson was taken ill, and had to remain in hospital at Leicester. We had a capable replacement in Butler, but such an incident, must have some effect upon the players. Our opponents, were of course desperate for points, and once they got on top very early in the game there was no holding them.

Not a very happy return for some of our players, who came to us from that area.

These notes must be written prior to the Walsall game, but here again, we seem to be against the luck, as they will be eager to regain some of their form after their heavy defeat 6—2 at Oldham. We seem to catch a number of teams on the rebound. Maybe the luck has changed, but Fellows Park has never been a very happy hunting ground for Swindon. Last season we were defeated there by 5 goals to 0. We look forward in hope.

Our manager Mr. Danny Williams, in a forthright speech at the Annual General Meeting, assured us that he had faith in his players, and everything possible would be done to avoid relegation. He was here at Swindon to do a job, and **he** was going to do it. Now was the time for everyone to pull together and be behind the team, to encourage not to criticise. He is

Come Co-operative Shopping



FOR
THE BEST
IN
MEN'S
WEAR

**SWINDON AND DISTRICT CO-OPERATIVE SOCIETY
6 FLEET STREET, SWINDON**

certainly a straight forward, down to earth gentleman and we have every confidence he will yet develop a winning formation. The wheel is bound to turn, and we earnestly hope that will be soon.

The brightest spot at the moment is the form shown by the Reserve Team. A very young side travelled to Nottingham to play the Forest, and all that most people hoped for was that they would keep the score against down to a reasonable figure. Oh no, they defeated the Reserve team of a Division One team by 3 goals to 2.

Last Saturday they entertained Fulham Reserves, whose team listed names like Macedo, Drake, Pearson, Parmenter and Dyson. Here again our lads were successful by 3 goals to 1. The future looks promising when one remembers that the oldest player in the team was Jimmy Giles at centre-half (with the exception of Peter Downsborough). The side was composed of two amateurs, four apprentices, and four lads twenty years of age.

Not only did these boys play with determination, and spirit, they also displayed great skill. Many fine moves developed, and probably the most amazing thing was the number of perfect centres delivered from both wings, dropping exactly on the penalty spot. From these we produced many fine headers which caused great difficulty to goalkeeper Macedo. Our goalkeeper caught the enthusiasm and fighting spirit of the young lads in front for him, when he made an excellent save from a penalty kick. Altogether a grand match, thoroughly enjoyed by the two thousand spectators present. Such displays will no doubt encourage support and give heart for the future.

Tel. Swindon 5884

W. J. SELWOOD

Saddlery

General Leather Goods Manufactured
and Repaired to Your Individual
Requirements

148a MANCHESTER ROAD
SWINDON, WILTS.

Always at your service

L. BIBBY

For all Types—Rags, Iron and Metal,
etc. Spot Cash Paid. Please Tel. 2101
and our van will call.

THE PADDOCK, ERMIN STREET
STRATTON ST. MARGARET

★ **Cedarwood Sheds**

★ **Workshops and Greenhouses**

Made locally by

H. R. SPACKMAN

SHRIVENHAM ROAD - SWINDON - WILTS.

Telephone Swindon 4458

**WISES CATERING
SERVICE**

(Reg. Wise)

Our Caterer for the past 18 seasons
Guarantees

A GOOD CUP OF TEA AT THE
COUNTY GROUND

A full range of Sweets & Cigarettes
at any of our five kiosks on your
way in. **ENJOY YOURSELF**

**Warnes Rentals—
*To be sure!***

**51 Commercial Road,
SWINDON**

Tel: 6486

Obviously some of these young lads will soon be knocking at the door of the first-team, but do not let us expect too much from them, especially on their first appearance.

This afternoon we welcome old friends from Swansea Town. They were relegated, with us at the end of Season 1964 /65, and like us, have not enjoyed the best of luck. They are near the foot of the league table and will doubtless fight all the way for the precious points. Dare we say it, Swansea usually do well at Swindon, and one of their players Jimmy McLaughlin has a field day. Many remember his displays when he was a member of the Shrewsbury team. We must also mention Ivor Allchurch the inside forward, always a thorn in our flesh.

Last season we drew 1—1 at Swansea in the third game of the season, having drawn 0—0 with Oxford at home, and won 2—0 at York.

The return match at home was played on Saturday, 5th February, 1966, before a crowd of 13,625. We were in fourth position in the league table. The result of the game was a draw, two goals each. East scored both Swindon's goals, and those of Swansea were scored by Allchurch and McLaughlin. Swindon—Downsborough; Butler, Trollope; Morgan, Nurse, Richardson; Henderson, Smart, East, Brown, Rogers. Swansea—Hayes; Hughes, Evans R.; Williams, Purcell, Thomas; Evans B., Allchurch, Todd, McLaughlin, Humphries.

The team, may be affected by the International matches being played today, as Allchurch has gained almost forty Welsh caps, and McLaughlin has represented Ireland on many occasions. At the time of going to press, neither has been selected this season.

WILSONS (SWINDON) LTD.

BUILDERS OF MODERN ATTRACTIVE
HOUSES AND BUNGALOWS

Enquiries to:

HEAD OFFICE: 90 COMMERCIAL ROAD, SWINDON 6361

SITE OFFICE: COVENTRY FARM ESTATE, WROUGHTON 271

SITE OFFICE: COLEVIEW ESTATE, STRATTON S.M. 314

Maylott Studios

For **GROUP & SPORT** Photographs

Official Photographer to
Swindon Town Football Club

31 FARINGDON ROAD
TEL. 22792

Notton's Cafe

COUNTY ROAD

200 yards from Ground

RIGHT ON THE BALL

L. Wollen

OFF LICENCE

WINES and SPIRITS

Arkell's Ales and Stout

373 Cricklade Rd., Swindon

Deliveries Daily

Phone 3508

C. DUNN & SON

Builders & Decorators

Alterations, Renovations,
Conversions, Plumbers &
Sanitary Engineers

503 CRICKLADE RD. Tel. 22522

W. COLLINS (Swindon) LTD.

TURF ACCOUNTANTS

69 COMMERCIAL ROAD - SWINDON

TEL. 21371

AND AT THE GREEN, LYNEHAM

DIVISION III

(up to, and including, Thursday, October 20th, 1966)

	P	W	D	L	F	A	Pts.
Queen's Park Rangers ...	12	7	4	1	39	14	18
Bristol Rovers ...	13	8	2	3	29	21	18
Oldham Athletic ...	13	8	1	4	31	16	17
Bournemouth & B.A. ...	12	7	2	3	15	13	16
Grimsby Town ...	12	7	1	4	24	15	15
Colchester United ...	12	6	3	3	26	19	15
Shrewsbury Town ...	12	6	3	3	21	18	15
Mansfield Town ...	12	5	5	2	19	21	15
Watford ...	12	5	4	3	13	10	14
Torquay United ...	13	5	3	5	21	15	13
Gillingham ...	13	4	5	4	16	19	13
Walsall ...	13	5	3	5	18	23	13
Oxford United ...	12	4	4	4	20	14	12
Peterborough United ...	12	3	6	3	18	17	12
Workington ...	11	5	1	5	21	19	11
Doncaster Rovers ...	12	4	3	5	13	31	11
Middlesbrough ...	12	4	2	6	21	26	10
Reading ...	13	4	2	7	14	19	10
Darlington ...	14	4	2	8	12	24	10
Brighton & Hove A. ...	12	3	3	6	17	18	9
Scunthorpe United ...	12	4	1	7	14	24	9
Leyton Orient ...	12	2	4	6	11	16	8
Swindon Town ...	12	1	4	7	14	23	6
Swansea Town ...	13	1	4	8	17	29	6



W. J. CASTLE

Office and Bakery:
4 and 5 MARKET STREET
SWINDON

Telephone 22017

Specialists—

BIRTHDAY CAKES - WEDDING CAKES
DAIRY CREAM - PASTRIES
BUNS - ROLLS - SPONGES

Do not let **CHILBLAINS** spoil a good game



RELAPERNE

Price 2/6 from your CHEMIST

2/10 Post Paid from

BALLARD & CO. (CHEMISTS) LTD.

FARINGDON - BERKS

OUR VISITORS



SWANSEA TOWN A.F.C. LIMITED

BRIAN HUGHES (Right Half or Full Back)

Height 5ft. 10ins. Weight 11st. 7lbs. Welsh Youth and "Under 23" International. Another local product. Exceptionally strong in the tackle and a tireless worker.

KEITH TODD (Centre Forward)

Another local product. "Under 23" Welsh International. Has developed rapidly in past season. Prolific goal scorer.

HERBIE WILLIAMS (Wing Half)

Height 6ft. Weight 11st. 7lbs. Another local boy from the prolific Swansea Nursery. Ex-Schoolboy, Youth and "Under 23" and Full International. Colourful personality with a great shot in either foot.

BRIAN PURCELL (Centre Half)

Local product who has been with the Club since a junior. Equally at home at full back. Strong in the tackle and very quick in recovery.

ROY EVANS (Full Back)

Local boy who gained "Under 23" honours after a mere eight Football League appearances and a Full Welsh International Cap within two seasons. A class player with a wonderful future.

JIMMY McLAUGHLIN (Outside Left or Inside Forward)

Londonderry born. Ex-Birmingham City and Shrewsbury Town. Irish International at Intermediary and Full level. Dangerous raider and prolific goal-scorer.

BRIAN EVANS (Winger)

Signed from Welsh League team Abergavenny and pitchforked straight into first team. Equally at home at outside right or left. A young player of great promise. "Under 23" International.

G. H. FLOWER & SON LIMITED

WOOD LANE, CHIPPENHAM

LICENCE No. S.2802

PHONE 2017

SCRAP METAL

and

GENERAL WASTE SALVAGE DEALERS

Plant dismantling carried out

Members of
National Association of Non-Ferrous Metal Merchants

THE PORK SHOP

(Swindon Bacon Curing Co. Ltd.)

Specialists in

BACON - PORK - COOKED HAM

50 FLEET STREET - SWINDON

TEL. 22122

Meet your friends for an enjoyable evening at

THE KINGSDOWN ARMS

(Host A. W. Vann)

FULLY LICENSED - ARKELL'S BEERS

SNACKS - Etc.

STRATTON ST. MARGARET

Tel. 3283

OUR VISITORS—continued

KEN POUND (Winger)

Signed from Yeovil Town during 1964 close season. Can play on either flank and promises to be a dangerous winger with a tremendous shot in either foot.

ALAN JONES (Wing Half)

Ex-Swansea Schoolboy. Height 6ft. Weight 12st. Made his debut last season and was an immediate success. Very good in the air.

W. HUMPHRIES (Winger)

Signed from Coventry City where he was a member of their 3rd Division Championship side. A very skilful winger. An Irish International.

I. ALLCHURCH (Inside Forward)

Probably the greatest inside forward to have played for Wales. Joined Swansea from school and made his debut in 1950. Transferred to Newcastle United 1958 and to Cardiff in 1962. Returned to Swansea in the 1965 close season. A record number of caps for Wales.

G. HEYES (Goal)

Very experienced goalkeeper. Signed from Leicester City where he was understudy to Gordon Banks. Also played for Rochdale. Height 5ft. 11ins. Weight 12st. 6lbs.

G. THOMAS (Wing Half)

18 year old Swansea born Schoolboy and Youth International. Made his debut last season. A player of great promise.

BRETTS

PET AND GARDEN SUPPLIES

32-33 Commercial Rd.
Swindon

6 Cromwell St.
Swindon

HOLMES & LUCAS

For a complete range of the very latest in radio,
television and all domestic appliances

Home demonstrations.

Top Part Exchanges

HOLMES & LUCAS, 14 Regent Street

Tel. 22526 & 4721

FOR ALL YOUR ANGLING NEEDS
CONSULT

FRANK WOODWARD

Swindon's Fishing Tackle Specialist
25 HAVELOCK ST., SWINDON
PHONE 3879

For Paints of Good Quality

H. S. HODGES & SONS (SWINDON) LTD.

CRICKLADE RD., SWINDON
PHONE 22422

Dulux, Brolac, Valspar, Wallcharm,
etc.

SOUTHERN LAUNDRY CO. LTD.

Launderers and Dry Cleaners
HAYDON ST. - SWINDON
TELEPHONE 4161

COMLEY'S

Modern Music Centre
26 HAVELOCK ST., SWINDON
RECORDS - MUSIC - INSTRUMENTS
Top Twenty 'Pops' always in stock
and wide selection of Jazz & Classics
Personal Supervision Phone 3874

SUPPORTERS *CLUB* NOTES

Wednesday, the 12th inst., was the day on which shareholders of the Swindon Town Football Co. Ltd. — or as many as could — attended the Annual General Meeting, and received the report of the Chairman and Directors on the preceding year's operations. This year's Meeting was highlighted by a motion to reduce the number of Directors to a maximum of five. The Proposer, Mr. Newman, outlined his reasons for the reduction, and his argument was based mainly on the fact that the Club's affairs are not prospering as they should in a town expanding as rapidly as is Swindon. The motion was defeated, but from the number of votes cast it was obvious that the proxy votes of shareholders not present at the Meeting was a considerable factor.

The Proposer, apart from being a shareholder sufficiently interested to attend the Meeting, is obviously a supporter sufficiently concerned with the Club's future to put his views to the test. An allied proposal to change the voting system from one shareholder one vote, to one vote for one share, was debated at an Extraordinary Meeting immediately following the A.G.M. This proposal was also lost on a vote.

It might be inferred from all this that the Shareholders — who one must assume to be Supporters as well — are satisfied with the progress of the Club. No assumption could be more dangerous. The next eight weeks will be vital and will depend entirely upon the eleven players of the first team in the League matches in that period. They, I am sure, depend an awful lot on the support they receive from the terraces, particularly vocal support. So let's get back as quickly as possible to the

Hatton's Newsagency

A. J. D. & N. J. Woodhouse

**Newsagents :: Tobacconists
Confectioners**

Agents for Wessex School of
Motoring

Booking Agents for Rimes Coaches

6 Regent Circus (near G.P.O.)

Telephone Swindon 22731

HULFORD MOTORS Ltd.

SELF DRIVE HIRE

Fleet of 1966 Fords
Anglias De-Luxe - Cortinas
De-Luxe - Zephyr 4s.

SHRIVENHAM ROAD

(200 yards from Football Ground)

Phone 4934

Large Car Park available

For High Class
Central Heating, Plumbing
Painting and Decorating
Electrical Installations
and Repairs

**NORTH WILTS
Sanitary & Heating
Co. Ltd.**

NEWPORT ST., SWINDON

Phone 5373/4

FLOODLIGHTING?

Warnes Installations

BATHURST CORNER, COUNTY RD., SWINDON

Electrical Contractors to the "Wessex School of Motoring"

WE INSTALLED THIS FLOODLIGHTING

SWINDON TOWN

Downsborough

Thomas (2)

Trollope

Smart (4)

Nurse (5)

Rogers (7)

Brown (8)

East (9)

Butler

Swindon Colours:

RED SHIRTS, WHITE SHORTS

Swindon's 12th Man
MORGAN

EVERY FRIDAY 6D. EVERY FRIDAY 6D.

**SWINDON
ECHO**

EVERY FRIDAY 6D. EVERY FRIDAY 6D.

Evans, B. (11) Allchurch (10) Coughlin (9) McLane

Williams (6)

Purcell (5)

Gomersall (3)

Hughes

Heyes

SWANSEA TOWN

Mills & Merrick

Complete House Furnishings

Furnishing Contractors

16-17 BRIDGE STREET, SWINDON.

G? *Installations Limited*

R, COUNTY RD., SWINDON. Tel. 27291

cal Contractors to the "Town"
LED THIS FLOODLIGHT SYSTEM

SWINDON TOWN

Downsborough

(2) Trollope (3)
Nurse (5) Harland (6)
(9) East (9) Butler (10) Walker (11)

EVERY FRIDAY 6D. EVERY FRIDAY

SWINDON ECHO

DAY 6D. EVERY FRIDAY 6D. EVERY

(10) Coughlin (9) McLaughlin (8) Humphries (7)
Purcell (5) Thomas (4)
Hall (3) Hughes (2)

Heyes

SWANSEA TOWN

& Merricks Ltd.

te House Furnishers and
Furnishing Contractors

ET, SWINDON.

Tel: 5365/6

McILROY'S — RESTAURANT —

Banqueting & Ballroom

for morning coffee,
luncheon and
afternoon tea - in
pleasant surroundings -
you will find McIlroys
are top of the
'league'. For all
occasions.

Fully Licensed. Parties and
Functions catered for.

McIlroys Restaurant

64-72 Regent Street

Tel. 5294



COATE GARAGE

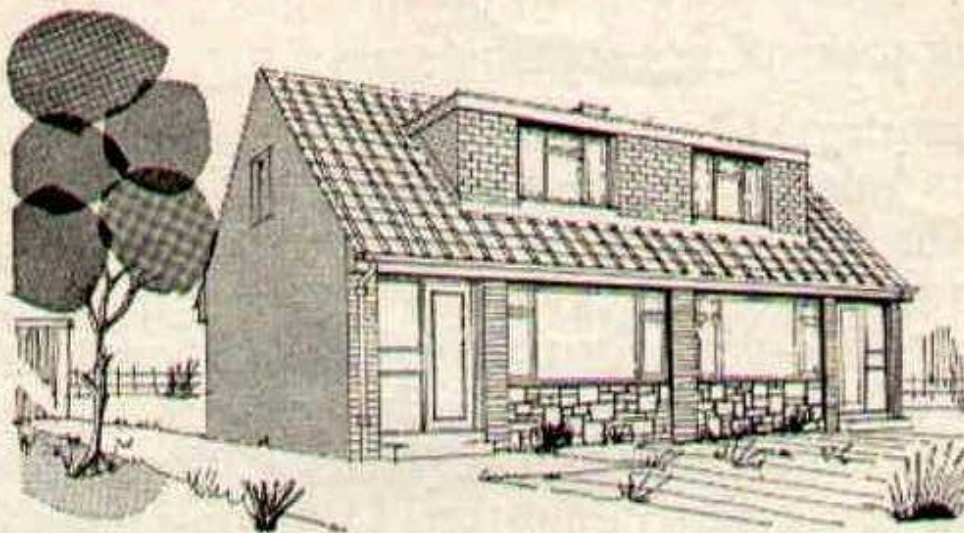
REPAIRS - OVERHAULS - WELDING
SERVICING - REBORING - TYRES

Props. E. V. & W. H. Mattick
Marlborough Rd., Swindon

DIVISION III

Date	Opponents	Gate	Ground	Result
August 20	BRIGHTON & HOVE ALBION	10,102	(A)	2—2
24	BOURNEMOUTH & B.A. (League Cup)	7,769	(H)	2—1
27	DARLINGTON	10,855	(H)	4—0
September 3	QUEEN'S PARK RANGERS	7,900	(A)	1—3
6	COLCHESTER UNITED	11,600	(H)	1—1
10	WATFORD	9,999	(H)	1—2
13	PORTSMOUTH (League Cup)	7,784	(H)	4—1
17	BRISTOL ROVERS	10,907	(A)	0—3
24	READING	9,064	(A)	1—2
26	COLCHESTER UNITED	7,874	(A)	1—2
October 1	DONCASTER ROVERS	7,780	(H)	0—1
4	DONCASTER ROVERS (League Cup)	9,190	(A)	1—1
8	SHREWSBURY TOWN	7,985	(H)	2—2
11	DONCASTER R. (League Cup Replay)	8,147	(H)	4—2
15	MIDDLESBROUGH		(A)	0—4
18	WALSALL		(A)	1—1
22	SWANSEA TOWN		(H)	
29	BOURNEMOUTH & B.A.		(A)	
November 5	LEYTON ORIENT		(H)	
12	GILLINGHAM		(A)	
19	WORKINGTON		(H)	
26	(1)		()	
December 3	OLDHAM ATHLETIC		(H)	
10	OXFORD UNITED		(A)	
17	BRIGHTON & HOVE ALBION		(H)	
24	PETERBOROUGH UNITED		(A)	
26	PETERBOROUGH UNITED		(H)	
31	DARLINGTON		(A)	
January 7	(2)		()	
14	WATFORD		(A)	
21	BRISTOL ROVERS		(H)	
28	(3)		()	
February 4	READING		(H)	
11	DONCASTER ROVERS		(A)	
18	(4) GRIMSBY TOWN		(H)	
25	SHREWSBURY TOWN		(A)	
March 4	MIDDLESBROUGH		(H)	
11	(5) GRIMSBY TOWN		(A)	
18	SWANSEA TOWN		(A)	
25	BOURNEMOUTH & B.A.		(H)	
27	TORQUAY UNITED		(A)	
28	TORQUAY UNITED		(H)	
April 1	LEYTON ORIENT		(A)	
8	(6) GILLINGHAM		(H)	
11	MANSFIELD TOWN		(H)	
15	WORKINGTON		(A)	
18	WALSALL		(H)	
22	SCUNTHORPE UNITED		(H)	
24	MANSFIELD TOWN		(A)	
29	(S.F.) OLDHAM ATHLETIC		(A)	
May 6	OXFORD UNITED		(H)	
12	SCUNTHORPE UNITED		(A)	

© The Football League, Limited, 1966



throughout the West

you will find Bradley Estates beautifully situated to meet the requirements of modern living. If you are thinking about a new home and would like to receive full details of our current and planned estates write now to 74 Victoria Road Swindon Wiltshire. Please send me details of

- ☐ Green Meadow Estate, Swindon, Wiltshire
- ☐ Nythe Estate, Swindon, Wiltshire
- ☐ Monkton Park Estate, Chippenham, Wiltshire
- ☐ Park Hill Estate, Frome, Somerset
- ☐ Milldown Estate, Blandford Forum, Dorset
- ☐ Southwick Estate, Trowbridge, Wiltshire
- ☐ Estate planned for Poole, Dorset

Name

Address



BRADLEYESTATES

SUPPORTERS' CLUB NOTES—continued

encouraging roars of not so long ago.

The Supporters' Club football team is active once more in the Swindon Sunday League. On Sunday last, the 16th, the first team beat the Fire Service by 4 goals to 1. The Reserve team beat Stratton British Legion by 11—1. Incidentally, the Reserve team is looking for friendly fixtures on Sunday mornings. Any club interested in a game are cordially invited to contact our Football Organiser, Mr. A. Ranger, either by writing to him, c/o the Supporters' Club, or contacting him in the Club on Saturday or evening matches.

A rapidly expanding list of attractions at the Social Club is now taking shape. Arrangements are in hand for the election of the 1966/67 Football Queen, and an entry form will be found on page 28. The closing date for entries is the 5th November, so would our attractive lady Supporters please get their pens out and entry forms in.

Where in Swindon, I wonder, can you get entry to a dance at least once a week, Bingo every Friday night, a comfortable lounge and dance floor with a juke box every other night of the week, with a well stocked bar at reasonable prices, and an expanding catering service of hot snacks — again at reasonable prices — for an outlay of 10/- a year? **At the Supporters' Social Club, of course.** The more you use it, the more we can provide. So turn to page 30, fill in the Application for Membership form, and join today.

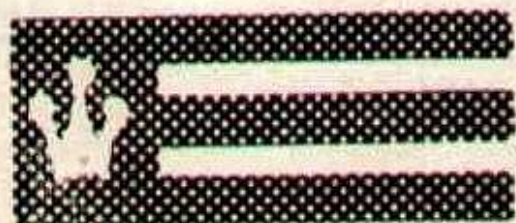
Here is a list of forthcoming bookings:

BINGO every Friday night. Except for the recovery of expenses in printing, all monies received are paid out in prizes. From 8.30 p.m. each **Friday night, BINGO.**

Saturday night is PARTY NIGHT. Come and dance, from 8.0 - 11.0 p.m., and bring your guests.

Suppliers to the Swindon Team

MAY WE SUPPLY YOU?



EARLE

of Chippenham Limited

MAIN

Ford

DEALERS

COCKLEBURY ROAD - CHIPPENHAM

Telephone 3255

Supporters' Club Notes—continued

Saturday, 22nd Oct. (Tonight)—THE ORTONA MUSIC

Saturday, 29th Oct.—THE SWINDON MUSIC CENTRE

(A special return visit of these fine music-makers after many requests by members)

Saturday, 5th Nov.—THE ORTONA MUSIC

Saturday, 12th Nov.—THE LESLIE GEORGE TRIO

Saturday, 19th Nov.—THE SWINDON MUSIC CENTRE

Swindon Town F.C. Sportsmen's Association

Week No. 1 (1st Series) Grey Tickets Oct. 10th—15th

Monday	£20	24976	£5	25749
Tuesday	£20	12141	£5	16008
Wednesday	£20	16047	£5	23843
Thursday	£20	20128	£5	12807
Friday	£20	17642	£5	22296
Saturday				£100	12868		

Swindon Town F.C. Sportsmen's Association

Week No. 2 (1st Series) Green Tickets Oct. 17th—22nd

Monday	£20	11373	£5	25400
Tuesday	£20	12197	£5	23452
Wednesday	£20	26675	£5	25633
Thursday	£20	12595	£5	25148
Friday	£20	16105	£5	12642
Saturday				£100	12337		

Claims with Tickets should be made not later than Nov. 7th, 1966. Next draw takes place at 8.30 p.m. at the New Inn, Stratton, on Monday, 24th Oct. Winning numbers and place of next draw published in the "Evening Advertiser" each Tuesday.

... not just concrete, but

Premix

SWINDON AREA OFFICE c/o COLN GRAVEL CO. LTD.
CLAYDON PIKE LECHLADE GLOS.

PHONE LECHLADE 461/2

Premix—an Amey company—serves 21 counties



CLARK BROS. (Swindon) Ltd.

Building and Civil Engineering Contractors

CONSULT US FOR
BUILDING AND CIVIL ENGINEERING
CONSTRUCTION IN ALL ITS PHASES

STRATTON ROAD
SWINDON

Telephone
Swindon 27261

KEY OF THE BOARD

First Section

- A—Ireland v. England
- B—Wales v. Scotland
- C—Arsenal v. West Bromwich A.
- D—Aston Villa v. Sheffield United
- E—Blackpool v. Newcastle
- F—Sheffield Wed. v Fulham
- G—Blackburn v. Norwich
- H—Bolton v. Coventry
- I—Carlisle v. Birmingham
- J—Charlton v. Bury
- K—Crystal Palace v. Rotherham
- L—Derby v. Preston N.E.
- M—Huddersfield v. Millwall
- N—Ipswich v. Hull
- O—Wolverhampton v. Plymouth
- P—Brighton v. Workington
- Q—Grimsby v. Bristol Rovers
- R—Mansfield v. Colchester
- S—Peterborough v. Oldham
- T—Reading v. Middlesbrough

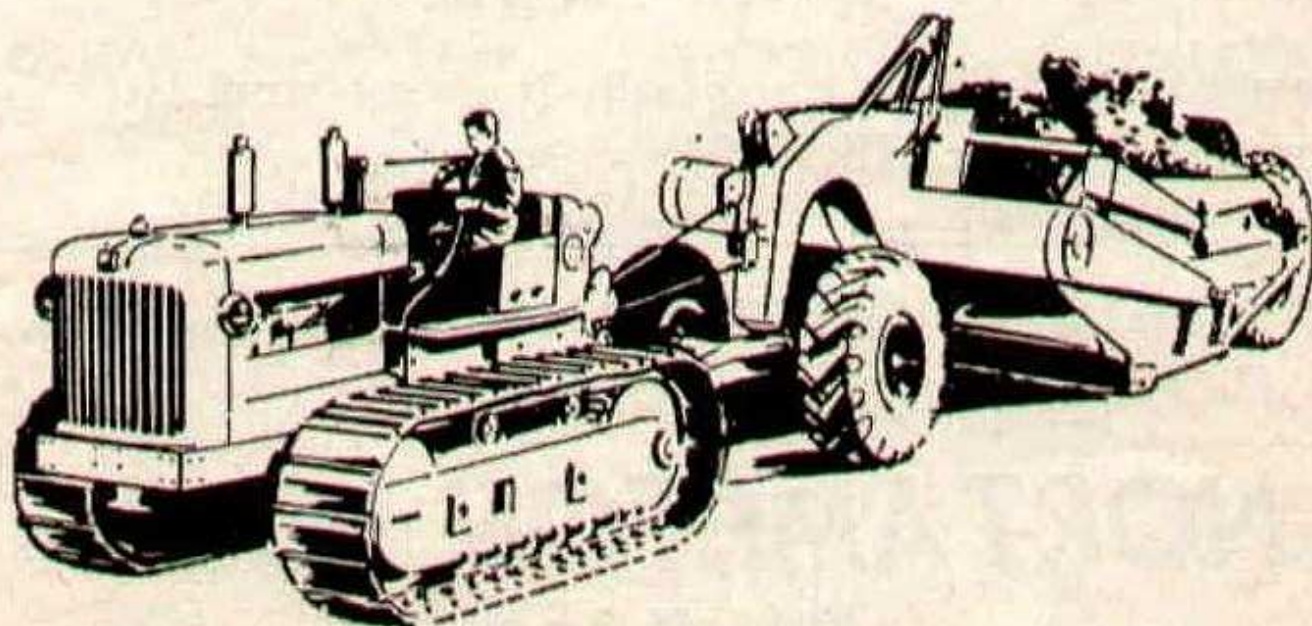
Second Section

- A—Torquay v. Scunthorpe
- B—Walsall v. Oxford Utd.
- C—Watford v. Bournemouth
- D—Barrow v. Tranmere
- E—Bradford v. Aldershot
- F—Crewe v. Southend
- G—Lincoln v. Exeter
- H—Notts County v. Barnsley
- I—Rochdale v. Brentford
- J—Southport v. Newport

H. HIBBERD LTD.

40 NEWPORT STREET, SWINDON

Plant Hire Contractors



FOR YOUR EARTH-MOVING EQUIPMENT

TELEPHONE SWINDON 6125

FORTHCOMING MATCHES

TUESDAY, 25th OCTOBER, 1966

FOOTBALL LEAGUE CUP

FOURTH ROUND

WEST BROM. ALBION

Kick-off 7.30 p.m.

Season ticket holders must claim their seats not later than Monday, October 24th, 1966.

SATURDAY, 29th OCTOBER, 1966

FOOTBALL COMBINATION

NORTAMPTON TOWN

Kick-off 3 p.m.

SATURDAY, 5th NOVEMBER, 1966

DIVISION III

LEYTON ORIENT

Kick-off 3 p.m.

Cecil Green

Artistic Decorations in all its branches

12 Armstrong Street, Swindon, Wilts. Tel. 4593

G. A. STREETLY

Tobacconist and Confectioner

10 BOURNE ROAD - MOREDON - SWINDON

Telephone: 4956

J. WILMER

**St. Margaret's Road
Swindon**

TELEPHONE 22535

"COAL!"
"COAL!"
"COAL!"

LEESE, ING & CO. LTD.

Mineral Water and Squash Manufacturers

LANSDOWN ROAD - SWINDON

TELEPHONE 22744

SWINDON TOWN F.C. SUPPORTERS CLUB

Football Queen 1967

ENTRY FORM

Full Name
(Block Letters)

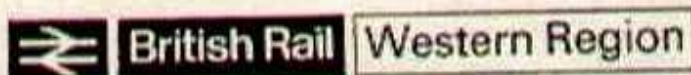
Address
.....

Age Occupation

Closing date 5th November, 1966.

Return form to:

**J. J. Plunkett, Hon. Gen. Secretary, 36 Nindum Road, Stratton
St. Margaret, Swindon.**



ESTABLISHED 1923

DOBELL SHEARMAN & CO. LTD.

£10 TYPEWRITERS from £10

Also full selection new standard and portable typewriters
OFFICE EQUIPMENT

29 High Street & 33 Faringdon Road, Swindon. Tel. 4961/2

The Advertisers in this programme have supported the Club. Will you help us reciprocate by supporting them whenever possible?

**SWINDON TOWN SUPPORTERS' SOCIAL CLUB
COUNTY GROUND, SWINDON
APPLICATION FOR MEMBERSHIP**

I, (name in BLOCK letters)

....., the undersigned, being a candidate for election, do hereby declare that, if elected, I will abide by the Rules and By-Laws of the Social Club.

On admission to membership, I will not knowingly, whether by word or deed, do anything prejudicial to the interests of the Club, and agree that any default in the observance of this pledge shall justify the Committee in terminating my membership of the Social Club.

I further declare that I am a member of the S.T.F.C. SUPPORTERS' CLUB and am over 18 years old.

Signature of Candidate
(Mr., Mrs. or Miss)

Address
.....
.....

Signatures of:
Proposer
Seconder

Membership fee is 10/- per year

Date of application.....

Date of membership

Please enclose a stamped addressed envelope if you wish your membership card to be returned by post.

F. J. ROPER
Devizes Rd.
Swindon
Phone 22341

F. J. ROPER
Cliftonian
38 William St.
Swindon
Phone 3785

Swindon's
Finest
FISH and CHIPS

**CALL ON
YOUR
WAY
HOME**

Menu

**PLAICE
HAKE
COD
SKATE**

**WE SHALL BE
WAITING
TO
SERVE YOU**

F. J. ROPER
High St.
W'tton Bassett

F. J. ROPER
Cross Hayes
Malmesbury



HAVE YOU PURCHASED YOUR TICKET FOR TODAY'S
HALF-TIME

ROBINS FLUTTER?

FIRST PRIZE £50

SECOND PRIZE £30

THIRD PRIZE £20

Plus additional Bonus Prizes

Tickets 1/- each

Last week's winning numbers:

First Prize 11—05—11

Second Prize 13—05—12

Third Prize 05—16—30

Bonus Prizes for all Tickets marked "Bonus Winner"





MY MASTER SAYS THAT
**MAN'S SECOND BEST FRIEND
IS A SAVINGS BANK ACCOUNT**

Local Offices
17 Commercial Road, Swindon.
6 Maryport Street, Devizes.

T RUSTEE
S AVINGS
B ANK

8,000 SEATS FOR SHEFFIELD WEDNESDAY F.C.

6,000 SEATS FOR SHEFFIELD UNITED F.C.

7,000 SEATS FOR ASTON VILLA F.C.

4,000 SEATS FOR PETERBOROUGH AGRICULTURAL SOCIETY

3,000 SEATS FOR OLDHAM F.C.

10,000 SEATS FOR HULL CITY F.C.

FAST, EFFICIENT SERVICE FROM MARTYN LYNSHAW LTD.

- **LIGHT CONSTRUCTIONAL STEELWORK**
- **BALUSTRADING AND MOTORWAY FENCING**
- **ANCILLARY WORK FOR THE BUILDING TRADE**



Telephone
21844

**FAST EFFICIENT SERVICE BY
MARTYN LYNSHAW LIMITED**

BOUNDARY WORKS - STRATTON ROAD - SWINDON